

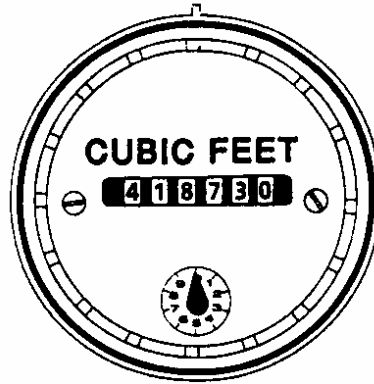
Household Water Use Tips

4 1 8 7 3 0

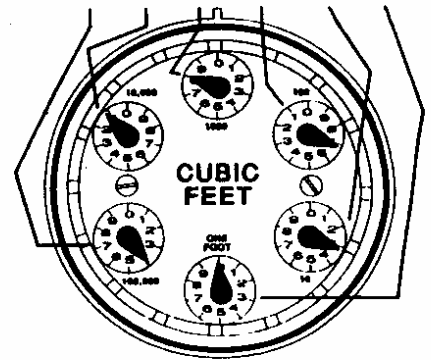
LEARN TO READ YOUR WATER METER

KNOWING HOW CAN HELP YOU:

- Detect a leak
- Measure the amount of water your family uses
- Understand your water bill



Some meters read straight across like the odometer on a car. Remember your meter is never reset.



Other meters are circular with five or six dials. Read each dial clockwise, starting at the 100,000 dial. If a pointer is between two figures, read the lower number.

HOW MANY GALLONS OF WATER DOES YOUR FAMILY USE PER DAY?

1. Read your meter before using any water.
2. Keep track of all indoor water-using activities for one day. (See example)
3. Calculate the number of gallons used for each activity. Use the "Water Activity Chart" below.
4. Divide total gallons of water used by the number of family members to get a per-person consumption rate.
5. Read your meter the next morning to verify your calculations.

An overall 10% reduction in water consumption is expected after installing flow restrictors and toilet displacement bags. Remeasure your water consumption after installing these conservation devices.

TOTALS	
BEGINNING METER READING	_____
BATHROOM	
Toilet	18 flushes x 5 gal/flush = 90 GAL.
SINK	6 minutes x 3 gal/minute = 18 GAL.
SHOWER	25 minutes x 5 gal/minute = 125 GAL.
KITCHEN	
SINK	6 minutes x 3 gal/minute = 18 GAL.
Dishwasher	1 wash cycle x 15 gal/use = 15 GAL.
OTHER	
LAUNDRY	1 wash cycle x 37 gal/use = 37 GAL.
	303 GAL. per day
$303 \div 4$ (# in family) = 76 gal. per person	
FINAL METER READING	_____

A typical family of four uses 255 gallons of water per day.

Water Activity Chart

	Gallons Used per use	Water Savings Over Conventional Methods (percentage %)		Gallons Used per minute	Water Savings Over Conventional Methods (percentage %)
TOILET			FAUCETS		
• Conventional	5	---	• Conventional	3	---
• Common low-flush	3.5	32	• Common low-flow	2.5	17
WASHING MACHINE			• Flow-limiting	1.5	50
• Wash recycle	26	29	SHOWERHEADS		
• Front load	21	43	• Conventional	5	---
			• Common low-flow	3	42
			• Flow-limiting	2	63

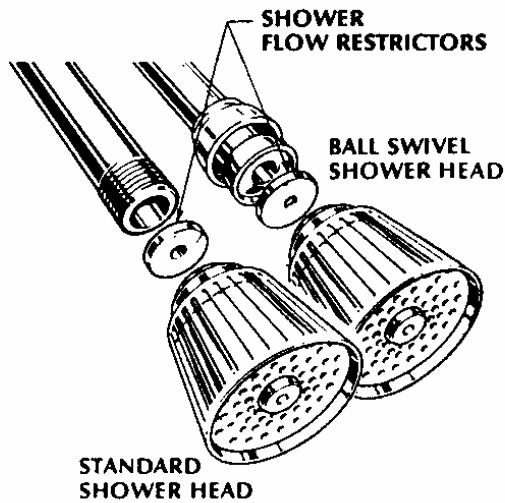
HOW TO USE YOUR WATER METER TO CHECK FOR LEAKS

Water meters can detect a leak in your water system:

- Locate your meter. It is usually found in a meter box in a small concrete vault near the street.
- Turn off all faucets in and around the home.
- Check the meter reading.
- Wait 15 minutes.
- Read your meter again. If the reading has changed, you have a leak that needs immediate attention.

Clean, safe water is a precious and limited resource. Reducing water waste can ensure an adequate, affordable supply.

LET'S USE WATER WISELY.

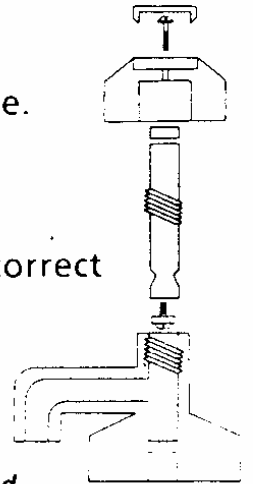


Bathroom Fixtures

Bathroom use accounts for 73% of all water used in the home. Small changes add up to big water savings. Install a shower flow restrictor and save two to three gallons of water per minute. Faucet restrictors save water too.

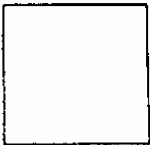
How To Fix A Leak

1. Turn off water supply to faucet.
2. Remove decorative cover and handle.
3. Remove collar or locknut.
4. Take out stem.
5. Replace washer. Be sure to use the correct size and type of washer.
6. Reverse the process to reassemble.
7. Turn water supply back on.



Remember, all faucets are not alike. You may need the assistance of an expert.

DSHS 22-644 X (5/88)



WASHINGTON STATE
DEPARTMENT OF
ECOLOG Y
Water Resources Program
(P.O. Box 47600
Olympia, WA 98504-7600

Washington State Department of
Health
Division of Drinking Water
(P.O. Box 47822
Olympia, WA 98504-7822

WATER SAVING

Guideline 2

Find Out How To Save Water Indoors